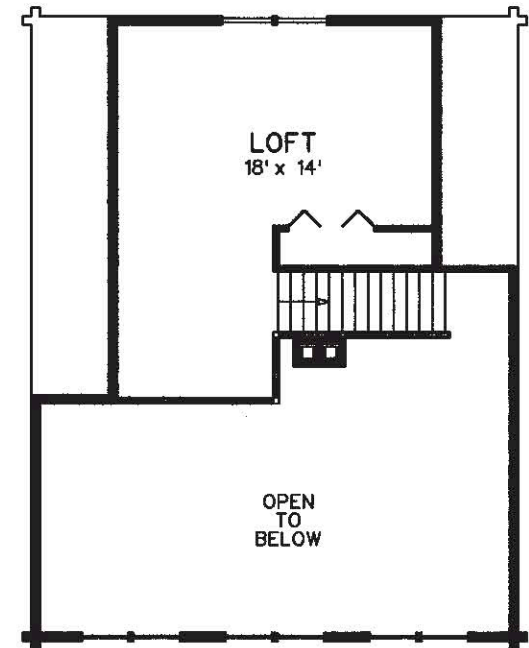


First Floor



Loft

Oquossoc

The Oquossoc's spacious layout will make gathering with friends and family a welcomed event. An open floor plan is highlighted by a 27'x15' cathedral ceiling great room with a dramatic glass front gable. Patio doors provide access to an attached deck. The 15'x15' master bedroom has its own full bath. Bedrooms #2 and #3 share a full bath. An 18'x14' loft with panoramic views provides lots of room to entertain or accommodate overnight guests. Life doesn't get any better than this.

Property of Maine Pine Log Homes

This is an artist's rendering. Actual design may vary slightly.

Maine Pine
LOG HOMES
 by Hammond Lumber Company